



**INTERNATIONAL  
GEMOLOGICAL  
INSTITUTE**

**ELECTRONIC COPY**

**LABORATORY GROWN DIAMOND REPORT**

**IGI GEMOLOGICAL REPORT**

**ADDITIONAL INFORMATION**

**IGI LABORATORY GROWN  
DIAMOND ID REPORT**

IGI Report Number **LG384922604**  
Report Date **December 23, 2019**  
Shape **ROUND BRILLIANT**

Carat Weight **0.57 Carat**  
Color Grade **F**  
Clarity Grade **SI 2**  
Cut Grade **IDEAL**  
Polish **VERY GOOD**  
Symmetry **EXCELLENT**  
Fluorescence **NONE**  
Inscription(s) **LABGROWN IGI  
LG384922604**

Comments:  
This Chemical Vapor Deposition (CVD) laboratory grown diamond is classified as Type IIa

**IGI LABORATORY GROWN  
DIAMOND ID REPORT**

IGI Report Number **LG384922604**  
Report Date **December 23, 2019**  
Shape **ROUND BRILLIANT**

Carat Weight **0.57 Carat**  
Color Grade **F**  
Clarity Grade **SI 2**  
Cut Grade **IDEAL**  
Polish **VERY GOOD**  
Symmetry **EXCELLENT**  
Fluorescence **NONE**  
Inscription(s) **LABGROWN IGI  
LG384922604**

Comments:  
This Chemical Vapor Deposition (CVD) laboratory grown diamond is classified as Type IIa

**IGI LABORATORY GROWN DIAMOND GRADING REPORT**

Report Date **December 23, 2019**  
IGI Report Number **LG384922604**  
Shape and Cutting Style **ROUND BRILLIANT**  
Measurements **5.33 - 5.37 X 3.24 MM**

**GRADING RESULTS**

Carat Weight **0.57 Carat**  
Color Grade **F**  
Clarity Grade **SI 2**  
Cut Grade **IDEAL**

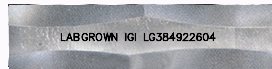
**ADDITIONAL GRADING INFORMATION**

Polish **VERY GOOD**  
Symmetry **EXCELLENT**  
Fluorescence **NONE**  
Inscription(s) **LABGROWN IGI LG384922604**

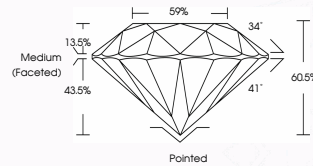
Comments: **This Chemical Vapor Deposition (CVD) laboratory grown diamond is classified as Type IIa**



PHOTO ENLARGED



LASERSCRIBE™



The Laboratory Grown Diamond (LGD) described in this Report has been analyzed, graded, and LaserScribed® by International Gemological Institute (IGI). A LGD has essentially the same chemical, physical and optical properties as a mined diamond, with the exception of being man-made (a manufactured product). LGDs are typically produced by CVD (chemical vapor deposition) or by HPHT (high pressure high temperature) growth processes and may include post-growth modifications to change the color. IGI utilizes the most advanced techniques and equipment currently available including binocular microscopes, diamond color masters, non-contact-optical measuring devices, a wide range of analytical techniques including FTIR, UV-VIS-NIR, raman spectroscopy, and fluorescence analysis at various excitation wavelengths. This Report includes advanced security features. This Report is neither a guarantee, valuation nor appraisal and by making this report IGI does not agree to purchase or replace the article.

© INTERNATIONAL GEMOLOGICAL INSTITUTE, INC

For Terms & Conditions, please visit [www.igi.org](http://www.igi.org)

THIS DOCUMENT WAS PRODUCED WITH THE FOLLOWING SECURITY MEASURES: SPECIAL DOCUMENT PAPER, INK SCREENS, WATERMARK BACKGROUND DESIGNS, HOLOGRAM AND OTHER SECURITY FEATURES NOT LISTED AND DO EXCEED DOCUMENT SECURITY INDUSTRY GUIDELINES