



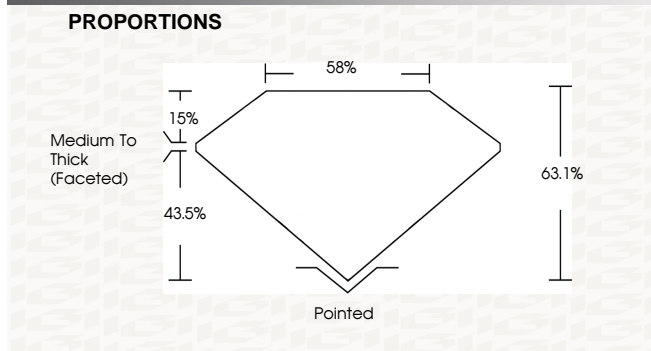
IGI GEMOLOGICAL REPORT IGI LABORATORY GROWN DIAMOND GRADING REPORT

05/19/2020 IGI Report Number LG418027108 Shape and Cutting Style PEAR BRILLIANT Measurements 8.59 X 5.61 X 3.54 MM GRADING RESULTS Carat Weight 1.00 CARAT Color Grade H Clarity Grade VS 1

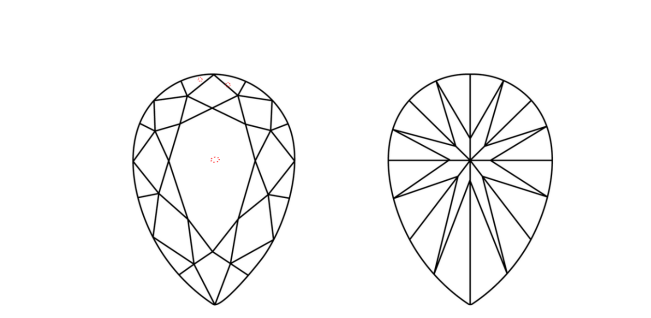
ADDITIONAL GRADING INFORMATION Polish EXCELLENT Symmetry VERY GOOD Fluorescence NONE Inscription(s) LABGROWN IGI LG418027108

Comments: This Chemical Vapor Deposition (CVD) laboratory grown diamond is classified as Type IIa

ADDITIONAL INFORMATION



CLARITY CHARACTERISTICS



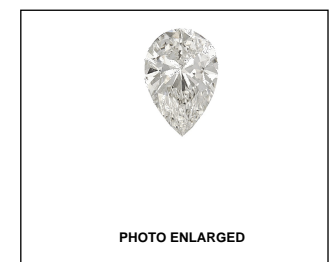
KEY TO SYMBOLS Red symbols indicate internal characteristics. Green symbols indicate external characteristics.

This Report is subject to the terms and conditions © IGI 2000, edition 2019 all rights reserved.

GRADING SCALES

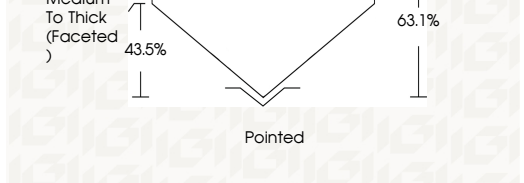
Table with 5 columns for Color Grading Scale (CL, NC, FT, VLT, LT) and Clarity (10x) Grading Scale (FL, IF, VVS, VS, SI, I).

The laboratory grown diamond described in this Report (Report) has been graded, tested, analyzed, examined and/or inscribed by International Gemological Institute (IGI). A laboratory grown diamond is one that has essentially the same chemical, physical and optical properties as a mined diamond...



IGI LABORATORY GROWN DIAMOND GRADING REPORT

05/19/2020 IGI Report Number LG418027108 Shape and Cutting Style PEAR BRILLIANT Measurements 8.59 X 5.61 X 3.54 MM GRADING RESULTS Carat Weight 1.00 CARAT Color Grade H Clarity Grade VS 1



ADDITIONAL GRADING INFORMATION Polish EXCELLENT Symmetry VERY GOOD Fluorescence NONE Inscription(s) LABGROWN IGI LG418027108

Comments: This Chemical Vapor Deposition (CVD) laboratory grown diamond is classified as Type IIa



05/19/2020 IGI Report No. LG418027108 PEAR BRILLIANT 8.59 X 5.61 X 3.54 MM Carat Weight 1.00 CARAT Color Grade H Clarity Grade VS 1 Depth 63.1% Table 15% Girdle Medium To Thick (Faceted) Culet Pointed Polish EXCELLENT Symmetry VERY GOOD Fluorescence NONE Inscription(s) LABGROWN IGI LG418027108 Comments: This Chemical Vapor Deposition (CVD) laboratory grown diamond is classified as Type IIa